

RHINO TUFF TANKS

Stackable Storage & Dispensing Systems



VE • AUTOMOTIVE • AUTOMOTIVE • AUTOMOTIVE • AUTOMOTIVE • AUTOMOTIVE •
RAL • AGRICULTURAL • AGRICULTURAL • AGRICULTURAL • AGRICULTURAL • AGRICULTURAL •
• INDUSTRIAL • INDUSTRIAL • INDUSTRIAL • INDUSTRIAL • INDUSTRIAL • IN

Since 2007, Rhino Tuff Tanks has been part of a diverse, family-owned group of companies centered on premium rotationally-molded products. Today, we operate out of more than 180,000 sq ft of manufacturing and warehouse facilities in beautiful Maple Lake, MN. We take pride in conducting business with integrity by holding ourselves accountable to you, our customer, in all areas of value: quality, service, and reliability. Striving to make our word more than just a promise, our mission is to be the stackable tank and fluid handling equipment brand of choice.

Not just tough, Rhino Tuff!

-Team RTT

**A
U
T
O
M
O
T
I
V
E**



TABLE OF CONTENTS:

STACKABLE TANKS.....3

GRAVITY FEED TANK PACKAGES.....4

PUMP SYSTEMS.....5

PORTABLE DEF - CHEMICAL.....6

CAGED TANK PACKAGES.....7

PORTABLE SYSTEMS.....8

ACCESSORIES.....9-10

**A
G
R
I
C
U
L
T
U
R
A
L**



**I
N
D
U
S
T
R
I
A
L**



STACKABLE TANKS

Effectively organize your bulk fluid inventory, eliminate hassles of handling 55 gallon drums and maximize valuable floor space with Rhino Tuff Tanks stackable tank systems. Individual tanks are designed with a common 36" x 36" footprint among all sizes. Tanks can be securely stacked with each other in any combination without requiring costly conversion brackets or racking. Using Natural Virgin High Density Polyethylene resins, Rhino Tuff Tanks provide a clean, stable, contamination-free container that will not rust or corrode – protecting your fluids from the environment. Combine with an array of accessories to create your own unique storage and dispensing system. RTT Systems have been certified as compliant with ULC 142.14-03 testing standards and bear the marking as such.



Model #	Description	Empty Weight	Assembled Dimensions (L x W x H)
RTT-1010	45 Gallon Tank	30 LBS	36" L x 36" W x 10" H
RTT-1110	80 Gallon Tank	45 LBS	36" L x 36" W x 18" H
RTT-1210	120 Gallon Tank	65 LBS	36" L x 36" W x 27" H
RTT-1310	180 Gallon Tank	95 LBS	36" L x 36" W x 39" H
RTT-1410	225 Gallon Tank	150 LBS	36" L x 36" W x 49" H
RTT-1510	310 Gallon Tank	170 LBS	36" L x 36" W x 66" H



GRAVITY FEED TANK PACKAGES

Rhino Tuff Tanks offers several complete Gravity Feed Systems with one convenient model number.



Model #	Description
RTT-6000-NV	45 Gallon System
RTT-6100-NV	45/45 Gallon System
RTT-6110-NV	45/45/45 Gallon System
RTT-6111-NV	45/45/45/45 Gallon System
RTT-6130-NV	45/80 Gallon System
RTT-6120-NV	45/120 Gallon System
RTT-6300-NV	80 Gallon Sytem
RTT-6330-NV	80/80 Gallon System
RTT-6333-NV	80/80/80 Gallon System
RTT-6200-NV	120 Gallon System
RTT-6220-NV	120/120 Gallon System
RTT-6222-NV	120/120/120 Gallon System
RTT-6320-NV	80/120 Gallon System
RTT-6800-NV	180 Gallon System
RTT-6280-NV	120/180 Gallon System
RTT-6880-NV	180/180 Gallon System
RTT-6400-NV	225 Gallon System
RTT-6420-NV	120/225 Gallon System
RTT-6481-NV	45/80/225 Gallon System
RTT-6500-NV	310 Double Ring System



Add A Level of Safety:
to your Gravity Feed Tank Packages with RTT-4036 Ball Valves on each tank outlet.

PUMP SYSTEMS

Pump Systems provide versatile options for clean, convenient and accurate dispensing from the tank, directly to your equipment. Side mount systems are compatible with Rhino Tuff's stackable tanks. All Side Mount and Top Mount Pump Systems are assembled at the factory. Wall Mount Systems are shipped unassembled.

Model #	Description
RTT-1101	Top Mount Standard Duty 3:1 Pump Package (Assembled)
RTT-1202	Side Mount Standard Duty 3:1 Pump Package (Assembled)
RTT-1303	Wall Mount Pump Package (Unassembled)
RTT-1901	Top Mount Heavy Duty Pump Package (Assembled)
RTT-1902	Side Mount Heavy Duty Pump Package (Assembled)
RTT-1903	Wall Mount Heavy Duty Pump Package (Unassembled)
RTT-1941	Side mount 3/4" Diaphragm Pump Package (Assembled)

For additional Pump Systems, visit www.rhinotufftanks.com



RTT-1202



RTT-1901



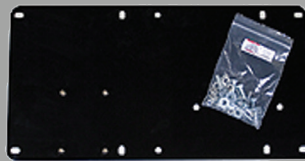
RTT-1101



RTT-1941

Mounting Plates & Brackets:

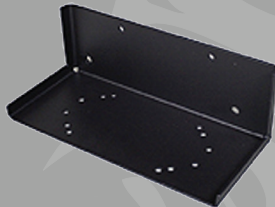
Add your own pump dispensing equipment using our universal mounting plates.



RTT-4025
Side Mount Plate w/ Hardware



RTT-4035
Universal Pump Bracket



RTT-4038
Universal Reel Bracket



RTT-4115
Pump Inlet Kit

PORTABLE DEF - CHEMICAL

Transport and dispense fluids, including DEF and a wide variety of other chemicals safely within a closed system unit. Dispensing equipment is protected from environmental conditions inside compartment with lockable hinged lid.

Closed DEF System Includes:



Model #	Description	Assembled Dimensions (L x W x H)
RTT-7080	80 Gallon Portable DEF System	36" L x 36" W x 27" H
RTT-7120	120 Gallon Portable DEF System	36" L x 36" W x 36" H
RTT-7180	180 Gallon Portable DEF System	36" L x 36" W x 48" H

DEF Accessories:



RTT-4444
4-Way Fork Lift Pallet



RTT-7030
In-Line Meter

CAGED TANK PACKAGES

Add seismic security to your tank system. Our 12-piece vertical cage secures the entire tank system to the stand base. Additional caged combinations are available – inquire for more information.



RTT-1425

Model #	Description	Assembled Dimensions (L x W x H)
RTT-1105	80 Gallon Tank	36" L x 36" W x 19" H
RTT-1205	120 Gallon Tank	36" L x 36" W x 28" H
RTT-1305	180 Gallon Tank	36" L x 36" W x 40" H
RTT-1405	225 Gallon Tank	36" L x 36" W x 50" H
RTT-1505	310 Gallon Tank	36" L x 36" W x 66" H
RTT-1485	80 / 225 Gallon Tanks	36" L x 36" W x 68" H
RTT-1425	120 / 225 Gallon Tanks	36" L x 36" W x 77" H
RTT-1580	80 / 310 Gallon Tanks	36" L x 36" W x 84" H
RTT-1435	180 / 225 Gallon Tanks	36" L x 36" W x 89" H

For additional Cage Systems, visit www.rhinotufftanks.com

All Packages Include:

- Tank
- Stand Base (no legs)
- Cage

BEFORE



AFTER



PORTABLE SYSTEMS

Portable Dispensing Systems bring the fluids to your equipment with ease.



RTT-7202

Available in 80, 120 and 180 Gallon Fully Outfitted Packages.

All Systems Include:

- Tank with 12-piece vertical cage/base
- 8" x 2" Caster Wheel Kit - 2 Rigid; 2 Swivel w/Brake (3960 lb load capacity)
- 3:1 pump with air filter regulator
- 1/2" x 50' hose reel
- Electronic non-preset Dispensing Meter
- 2-Way breather cap

Model #	Description	Assembled Dimensions (L x W x H)
RTT-7102	80 Gal Mobile Cart, Side Mount Pump	36" L x 47" W x 33" H
RTT-7202	120 Gal Mobile Cart, Side Mount Pump	36" L x 47" W x 42" H
RTT-7302	180 Gal Mobile Cart, Side Mount Pump	36" L x 47" W x 54" H

Use RTT-4444 4-Way Forklift Pallet to easily move, load and unload any RTT Tank



Portable Accessories:



RTT-4444
4-Way Fork Lift Pallet



RTT-1111
45 Gallon Vertical Tank



RTT-4535
Oil Ace Evacuation Cart



RTT-4740
8" Caster Wheel Kit

ACCESSORIES

Stands and Drip Trays

Heavy Duty welded Steel Stands are designed to specifically match RTT's contoured tank shape. Stand legs are constructed of 1-1/2" Diameter zinc-coated schedule 80 pipe and easily accommodate bolt-on Drip Tray Kits. Welded foot flanges allow tank systems to be securely anchored to the floor. RTT-4000 Elbow Kits are easily attached to the front lip of the stand base, creating a convenient oil bar anchor at your fingertips.

Model #	Description
RTT-2000	Stand Kit, 4" Legs
RTT-2500	Stand Kit, 18" Legs
RTT-2100	Stand Kit, 24" Legs
RTT-2200	Stand Kit, 36" Legs
RTT-2300	Stand Base Only



RTT-2100
Stand Kit



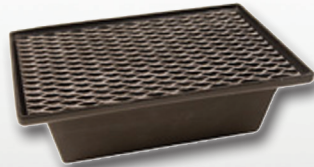
RTT-4000
Elbow Kit w/ Nut for Stand



RTT-3200
Drip Tray Kit
(Holder, 4 Pans/Screen)



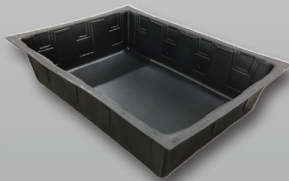
RTT-3000
Drip Tray Holder



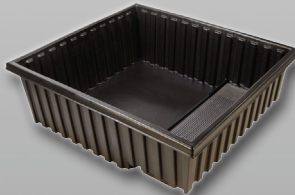
RTT-3100
Drip Tray Insert w/ Screen

Secondary Containment

SPCC Requires Secondary containment vessels must be able to hold a minimum of 110% capacity of the largest primary tank within a stack or that of an individual primary tank.



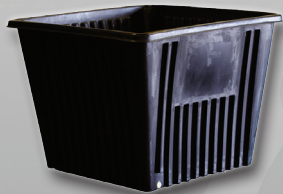
RTT-4042
Containment Vessel
150 Gallon



RTT-4040
Containment Vessel
203 Gallon



RTT-4043
Containment Vessel
300 Gallon



RTT-4041
Containment Vessel
360 Gallon



Model #	Description	Outside Dimensions (Top)	Inside Footprint	Height
RTT-4042	Containment Vessel - 150 Gallon	50" L x 67-1/2" W	39"L x 55" W	15"
RTT-4040	Containment Vessel - 203 Gallon	48" L x 65" W	37"L x 57" W	20"
RTT-4043	Containment Vessel - 300 Gallon	56-1/2" L x 94" W	45"L x 82" W	16"
RTT-4041	Containment Vessel - 360 Gallon	56" L x 56" W	39"L x 39" W	42"

*Accessorize or build your own system. Many additional accessories are available at rhinotufftanks.com

ACCESSORIES

Gravity Feed Accessory Packages

Our 2-Tank, 3-Tank and 4-Tank Gravity Feed Accessory Packages have everything you need in one box! Barbed Fittings, Braided Tubing, Hose Clamps, Thread Sealant – even an industrial Tub-O-Towel to clean up!



RTT-4092
2 Tank Accessory Package



RTT-4093
3 Tank Accessory Package



RTT-4094
4 Tank Accessory Package

Note: Valves Sold Separately

Model #	# Tanks	Poly 1" Elbow	Poly 1" Straight	1" Braided Tubing	Hose Clamps	Tube Thread Sealant	Elbow Kit (Stand)
RTT-4092	2	1	1	5 LFT	2	1	1
RTT-4093	3	2	2	9 LFT	4	1	2
RTT-4094	4	3	3	12 LF	6	1	3

Valves



RTT-4001
Brass Spring Release
Valve - UL Listed



RTT-4111
Brass Spring Release
Valve



RTT-4002
Poly Ball Valve Kit



RTT-4136
Brass Ball Valve Kit

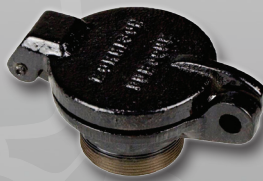


RTT-4137
Stainless Steel Ball
Valve Kit

Caps/Vents/Air Filters



RTT-4005
Desiccant Air Breather/Filter



RTT-4012
Fill Cap Hinged Cast Iron 2"



RTT-4032
1-way Breather Cap (2")



RTT-4034
2-way Breather Cap (2")

Additional Options

Transfer Jugs:

RTT-3701 (1 QT.)
RTT-3703 (3 QT.)
RTT-3705 (5 QT.)



Brand Your System:

With an 18" x 24" placard or 4" x 6" product identifier placards.





Contact Rhino Tuff Tanks:

For Sales, Product. or Pricing Information:

Phone: 630.527.9933

Email: rhinotuff@walshlong.com

INDUSTRY APPLICATIONS:

Eliminate the hassle of handling messy 55 gallon drums or bulky steel tanks in your liquid storage area. Rhino Tuff Tanks systems will help transform your area into a cleaner, more efficient work space by allowing multiple fluids to be stacked vertically!

Examples of specific uses for Rhino Tuff Tanks include, but are not limited to:

Automotive:

- Antifreeze
- Lubricants
- Transmission Fluids
- Washer Fluids
- Synthetic Oils

Farm/Ranch/Agricultural:

- Chemicals
- Herbicides
- Liquid Feed
- Pesticides
- Potable/Non-Potable Water

Chemical:

- Adhesives
- Detergents
- Dyes
- Syrups
- Other Food Grade Liquids

Industrial:

- Cutting Fluids
- Degreasers
- Detergents
- Hydraulic Fluids
- Lubricants

Rhino Tuff Tanks are constructed from Virgin High Density Polyethylene (HDPE) for optimum surface clarity, UV stabilization, and superior environmental stress crack resistance (ESCR). They are designed for use with polyethylene tolerant fluids and accessories.

Rhino Tuff Tanks systems have been certified to be in compliance with ULC 142.14-03 Nonmetallic Bulk Containers for the Storage and Dispensing of Combustible and Non-Combustible Liquids. Please contact Rhino Tuff Tanks, LLC for further certification information.

Resins used in the construction of Rhino Tuff Tanks are listed with the NSF as meeting the NSF 51 requirements and meet or exceed specifications contained in FDA Regulation 21 CFR 177.1520 (2) 3.1 and may be used as an article or as a component of articles for use in contact with food, subject to any limitations of the regulations.

Any use of Rhino Tuff Tanks with incompatible fluids, sealants, hoses, fittings, valves or any other incompatible accessories may cause a tank failure and will immediately void any and all manufacturer's warranty associated with the product(s) supplied by Rhino Tuff Tanks, LLC.

