



RHINO  TUFF TANKS
STACKABLE STORAGE & DISPENSING SYSTEMS



WHIP YOUR SHOP INTO SHAPE

WITH STACKABLE FLUID STORAGE AND DISPENSING SYSTEMS

Rhino Tuff Tanks stackable tank systems eliminate the hassles of handling 55 gallon drums. Organize your bulk fluid inventory and maximize valuable floor space by stacking multiple fluids vertically. Available in a variety of tank sizes, combinations and packages all Rhino Tuff Tanks are designed with a 36" footprint that allows them to be stacked in any combination without needing conversion brackets. Combine with an array of accessories to create your own unique storage and dispensing system. Systems have been certified as compliant with ULC-142.14-03 testing standards and bear the markings as such. Superior tank design, tough RotoMolded construction and heavy duty components, Rhino Tuff Tanks offer you the Total Tank Package!



RUGGED • ORGANIZED • EFFICIENT

For over 12 years, Rhino Tuff Tanks has been a manufacture of premium rotationally-molded stackable tanks and fluid handling equipment. Today we operate out of more than 180,000 sq ft of manufacturing and warehouse facilities in beautiful Maple Lake, MN. We take pride in conducting business with integrity by holding ourselves accountable to you, our customer in all areas of value: quality, service and reliability. Striving to make our word more than just a promise, our mission is to be the stackable tank and fluid handling equipment brand of choice.

Not Just Tough, RHINO TUFF!





RHINO  TUFF TANKS

STACKABLE TANKS



Rhino Tuff Tanks space saving design allows individual tank sizes to be stacked in any combination and eliminates the hassles of handling 55 gallon drums. Stackable Tanks are designed with a 36" x 36" footprint that allows them the ability to be interchangeably stacked together with no conversion brackets required. All tanks are constructed of High Density Polyethylene (HDPE) for optimum surface clarity, UV

stabilization and superior environmental stress crack resistance (ESCR). Rhino Tuff Tanks provide a clean, stable, contamination-free container that will not rust or corrode – protecting your fluids from the environment. Combine with an variety of accessory options to create your own unique fluid storage and dispensing system.



- 2" TOP OPENING FOR PUMP OR VENT APPLICATION
- 1" SIDE OPENING FOR DESICCANT BREATHER OR REMOTE FILL
- MOLDED-IN STAINLESS STEEL INSERTS FOR MOUNTING ACCESSORIES
- VERTICAL RIB DESIGN TO MINIMIZE WALL DEFLECTION
- 2 X MOLDED-IN #304 STAINLESS STEEL DRAIN BUSHINGS
- CONVENIENT 2" CENTER FILL OPENING
- SEE EXACT FLUID LEVELS - SEMI TRANSPARENT TANK WITH INTEGRATED VOLUME LEVEL INDICATORS
- INTERLOCKING TOP & BOTTOM RIDGES FOR SECURE STACKING
- SERIALIZED ULC GRAPHIC, IDENTIFICATION LABEL AND WARNING LABEL



| MODEL NO. | DESCRIPTION | EMPTY WEIGHT | ASSEMBLED DIMENSIONS |
|-----------|-----------------|--------------|-----------------------|
| RTT-1010 | 45 Gallon Tank | 30 lbs. | 36" L x 36" W x 10" H |
| RTT-1110 | 80 Gallon Tank | 45 lbs. | 36" L x 36" W x 18" H |
| RTT-1210 | 120 Gallon Tank | 65 lbs. | 36" L x 36" W x 27" H |
| RTT-1310 | 180 Gallon Tank | 95 lbs. | 36" L x 36" W x 39" H |
| RTT-1410 | 225 Gallon Tank | 150 lbs. | 36" L x 36" W x 49" H |
| RTT-1510 | 310 Gallon Tank | 170 lbs. | 36" L x 36" W x 66" H |





RHINO  TUFF TANKS

GRAVITY FEED TANK PACKAGES

Rhino Tuff Tanks offers several complete Gravity Feed Systems with one convenient model number.



ALL PACKAGES INCLUDE

STACKABLE TANKS

ACCESSORIES - BARBED FITTINGS, BRAIDED TUBING, HOSE CLAMPS, THREAD SEALANT AND INDUSTRIAL TUB-O-TOWEL

RTT-2100 STAND KIT WITH 24" LEGS

RTT-3200- DRIP TRAY KIT WITH 4 INSERT PANS AND SCREENS

VALVES ARE SOLD SEPARATELY TO ACCOMMODATE SPECIFIC NEEDS
SEE ALL AVAILABLE ACCESSORIES ON PAGES 15-18



RTT-6320



RTT-6111

RTT-6222



RTT-6400

RTT-4036 Ball Valves on each tank outlet adds another level of safety to your Gravity Feed Tank Package (sold separately see Accessories Pages 15-18).



| MODEL NO. | DESCRIPTION |
|-------------|---------------------------|
| RTT-6000-NV | 45 Gallon System |
| RTT-6100-NV | 45/45 Gallon System |
| RTT-6110-NV | 45/45/45 Gallon System |
| RTT-6111-NV | 45/45/45/45 Gallon System |
| RTT-6130-NV | 45/80 Gallon System |
| RTT-6120-NV | 45/120 Gallon System |
| RTT-6300-NV | 80 Gallon System |

| MODEL NO. | DESCRIPTION |
|-------------|---------------------------|
| RTT-6330-NV | 80/80 Gallon System |
| RTT-6333-NV | 80/80/80 Gallon System |
| RTT-3333-NV | 80/80/80/80 Gallon System |
| RTT-6200-NV | 120 Gallon System |
| RTT-6220-NV | 120/120 Gallon System |
| RTT-6222-NV | 120/120/120 Gallon System |
| RTT-6320-NV | 80/120 Gallon System |

| MODEL NO. | DESCRIPTION |
|-------------|-------------------------------|
| RTT-6800-NV | 180 Gallon System |
| RTT-6280-NV | 120/180 Gallon System |
| RTT-6880-NV | 180/180 Gallon System |
| RTT-6400-NV | 225 Gallon System |
| RTT-6420-NV | 120/225 Gallon System |
| RTT-6481-NV | 45/80/225 Gallon System |
| RTT-6500-NV | 310 Gallon Double Ring System |



RHINO  TUFF TANKS

PUMP SYSTEMS

Pump Systems provide versatile options for clean, convenient and accurate dispensing from the tank, directly to your equipment. Side mount systems are compatible with Rhino Tuff's stackable tanks. All Side Mount and Top Mount Pump Systems are assembled at the factory. Wall Mount Systems are shipped unassembled.

VISIT WWW.RHINOTUFFTANKS.COM FOR ADDITIONAL PUMP SYSTEMS

SEE ALL AVAILABLE ACCESSORIES ON PAGES 15-18



RTT-1903 - Wall Mount Heavy Duty Pump Package



RTT-1988 - Evacuation 3/4" Diaphragm Pump Package (Tank and Stand Sold Separately)



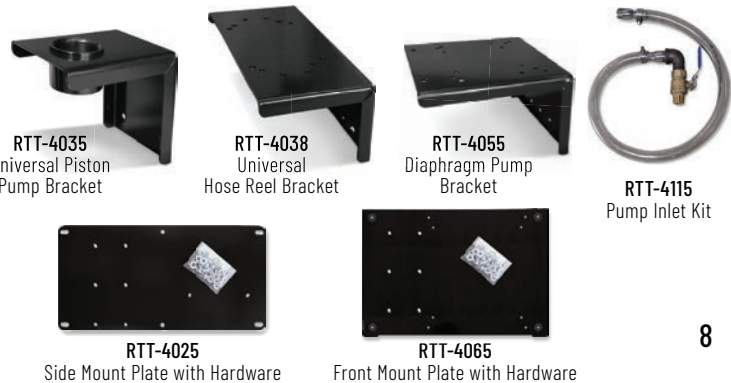
RTT-1901 - Top Mount Heavy Duty 3:1 Pump Package (Tank and Stand Sold Separately)



RTT-1941 - Side Mount 3/4" Diaphragm Pump Package (Tank and Stand Sold Separately)

| MODEL NO. | DESCRIPTION |
|-----------|---|
| RTT-1101 | Top Mount Standard Duty 3:1 Pump Package (Assembled) |
| RTT-1202 | Side Mount Standard Duty 3:1 Pump Package (Assembled) |
| RTT-1303 | Wall Mount Standard Duty 3:1 Pump Package (Unassembled) |
| RTT-1901 | Top Mount Heavy Duty 3:1 Pump Package (Assembled) |
| RTT-1902 | Side Mount Heavy Duty 3:1 Pump Package (Assembled) |
| RTT-1903 | Wall Mount Heavy Duty 3:1 Pump Package (Unassembled) |
| RTT-1941 | Side Mount 3/4" Diaphragm Pump Package (Assembled) |
| RTT-1988 | Evacuation 3/4" Diaphragm Pump Package (Assembled) |

Create a custom pump dispensing system specific to your needs by using RTT's universal mounting plates and brackets. (sold separately see Accessories Pages 15-18).





RHINO  TUFF TANKS

PORTABLE DEF - CHEMICAL

Transport and dispense fluids, including DEF and a wide variety of other chemicals safely within a closed system unit. Dispensing equipment is protected from environmental conditions inside compartment with lockable hinged lid.

ALL DEF SYSTEMS INCLUDE

- LOCKABLE LID FOR SECURITY
- MOLDED-IN TIE DOWN CORNERS FOR SECURE STRAPPING
- SEMI-TRANSPARENT TANK WITH INTEGRATED VOLUME LEVEL INDICATORS FOR SEEING EXACT FLUID LEVELS

RTT-7120
Shown with Optional
RTT-4444



- SS AUTOMATED SHUT-OFF NOZZLE WITH SWIVEL AND NOZZLE SUPPORT
- 12-VOLT DEF PUMP (7-9 GPM)
- POLY RSV INLET AND OUTLET VALVE WITH TAMPER EVIDENT ZIP TIE
- 3/4" X 20' DISPENSING HOSE



Enclosed, organized and safe chemical storage.

| MODEL NO. | DESCRIPTION | ASSEMBLED DIMENSIONS |
|-----------|--------------------------------|-----------------------|
| RTT-7080 | 80 Gallon Portable DEF System | 36" L x 36" W x 27" H |
| RTT-7120 | 120 Gallon Portable DEF System | 36" L x 36" W x 36" H |
| RTT-7180 | 180 Gallon Portable DEF System | 36" L x 36" W x 48" H |
| RTT-7580 | 80 Gallon DEF Tank/Lid | 36" L x 36" W x 27" H |
| RTT-7620 | 120 Gallon DEF Tank/Lid | 36" L x 36" W x 36" H |
| RTT-7730 | 180 Gallon DEF Tank/Lid | 36" L x 36" W x 45" H |



RTT's DEF Accessories simplify readability and mobility (sold separately see Accessories Pages 15-18).



RTT-4444
4-Way Fork Lift Pallet
40-3/8"L x 40-3/8"W x 10"H



RHINO  TUFF TANKS

CAGED TANK PACKAGES

Add seismic security to your tank system. Our 12-piece vertical cage secures the entire tank system to the stand base. Additional caged combinations are available visit www.rhinotufftanks.com.

ALL PACKAGES INCLUDE

TANK

STAND BASE (NO LEGS)

12 PIECE CAGE



RTT-1425
120/225 Gallon Tanks

BEFORE



AFTER



| MODEL NO. | DESCRIPTION | ASSEMBLED DIMENSIONS |
|-----------|-------------------------------|-----------------------|
| RTT-1105 | 80 Gallon Tank Package | 36" L x 36" W x 19" H |
| RTT-1205 | 120 Gallon Tank Package | 36" L x 36" W x 28" H |
| RTT-1305 | 180 Gallon Tank Package | 36" L x 36" W x 40" H |
| RTT-1405 | 225 Gallon Tank Package | 36" L x 36" W x 50" H |
| RTT-1505 | 310 Gallon Tank Package | 36" L x 36" W x 66" H |
| RTT-1885 | 80/80 Gallon Tanks Package | 36" L x 36" W x 37" H |
| RTT-1888 | 80/80/80 Gallon Tanks Package | 36" L x 36" W x 55" H |

| MODEL NO. | DESCRIPTION | ASSEMBLED DIMENSIONS |
|-----------|--------------------------------|-----------------------|
| RTT-1388 | 80/80/180 Gallon Tanks Package | 36" L x 36" W x 76" H |
| RTT-1225 | 120/120 Gallon Tanks Package | 36" L x 36" W x 55" H |
| RTT-1485 | 80/225 Gallon Tanks Package | 36" L x 36" W x 68" H |
| RTT-1425 | 120/225 Gallon Tanks Package | 36" L x 36" W x 77" H |
| RTT-1580 | 80/310 Gallon Tanks Package | 36" L x 36" W x 84" H |
| RTT-1435 | 180/225 Gallon Tanks Package | 36" L x 36" W x 89" H |



RHINO  TUFF TANKS

PORTABLE SYSTEMS

Portable Dispensing Systems keep fluids organized for quick dispensing and easily brings the fluids to your equipment. Heavy duty caster wheels have a load capacity of 3,960 lbs. Available in 80, 120 and 180 gallon fully outfitted packages.

ALL SYSTEMS INCLUDE

- TANK WITH 12-PIECE VERTICAL CAGE/BASE
- 8" X 2" CASTER WHEEL KIT - 2 RIGID & 2 SWIVEL WITH BRAKE (3960 LB LOAD CAPACITY)
- 3:1 PUMP WITH AIR FILTER REGULATOR
- 1/2" X 50' HOSE REEL
- ELECTRONIC NON-PRESENT DISPENSING METER
- 2-WAY BREATHER CAP



RTT-7102
80 Gallon Mobile Cart,
Side Mount Pump



RTT-7202
120 Gallon Mobile Cart,
Side Mount Pump



RTT-7302
180 Gallon Mobile Cart,
Side Mount Pump

| MODEL NO. | DESCRIPTION | ASSEMBLED DIMENSIONS |
|-----------------|---|-----------------------|
| RTT-7102 | 80 Gallon Mobile Cart, Side Mount Pump | 36" L x 47" W x 33" H |
| RTT-7202 | 120 Gallon Mobile Cart, Side Mount Pump | 36" L x 47" W x 42" H |
| RTT-7302 | 180 Gallon Mobile Cart, Side Mount Pump | 36" L x 47" W x 54" H |



RTT-4444
4-Way Fork Lift Pallet
40-3/8"L x 40-3/8"W x 10"H



RTT-4740
8" Caster
Wheel Kit



RTT-1111
45 Gallon Vertical Tank
36"Lx18"Wx20"H



RTT-4535
Oil Ace
Evacuation Cart

RHINO TUFF TANKS ACCESSORIES

STANDS AND DRIP TRAYS

Heavy Duty welded Steel Stands are designed to specifically match RTT's contoured tank shape. Stand legs are constructed of 1-1/2" Diameter zinc-coated schedule 80 pipe and easily accommodate bolt-on Drip Tray Kits. Welded foot flanges allow tank systems to be securely anchored to the floor. RTT-4000 Elbow Kits are easily attached to the front lip of the stand base, creating a convenient oil bar anchor at your fingertips.



RTT-2100
Stand Kit

| MODEL NO. | DESCRIPTION |
|-----------|---------------------|
| RTT-2000 | Stand Kit, 4" Legs |
| RTT-2500 | Stand Kit, 18" Legs |
| RTT-2100 | Stand Kit, 24" Legs |
| RTT-2200 | Stand Kit, 36" Legs |
| RTT-2300 | Stand Base Only |



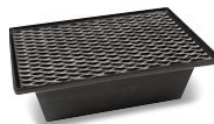
RTT-4000
Elbow Kit with
Nut for Stand



RTT-3200
Drip Tray Kit
(Holder, 4 Pans & Screens)



RTT-3000
Drip Tray Holder



RTT-3100
Drip Tray Insert with Screen



RTT-3701 1 qt. Transfer Jug
RTT-3703 3 qt. Transfer Jug
RTT-3705 5 qt. Transfer Jug

SECONDARY CONTAINMENT

SPCC requires secondary containment vessels must be able to hold a minimum of 110% capacity of the largest primary tank within a stack or that of an individual primary tank.

| MODEL NO. | DESCRIPTION | OUTSIDE DIMENSIONS (TOP) | INSIDE FOOTPRINT | HEIGHT |
|-----------|---------------------------------|--------------------------|------------------|--------|
| RTT-4042 | Containment Vessel - 150 Gallon | 50" L x 67-1/2" W | 39" L x 55" W | 15" |
| RTT-4040 | Containment Vessel - 203 Gallon | 48" L x 65" W | 37" L x 57" W | 20" |
| RTT-4043 | Containment Vessel - 300 Gallon | 56-1/2" L x 94" W | 45" L x 82" W | 16" |
| RTT-4041 | Containment Vessel - 360 Gallon | 56" L x 56" W | 39" L x 39" W | 42" |



RTT-4042
Containment Vessel
150 Gallon



RTT-4040
Containment Vessel
203 Gallon



RTT-4043
Containment Vessel
300 Gallon



RTT-4041
Containment Vessel
360 Gallon

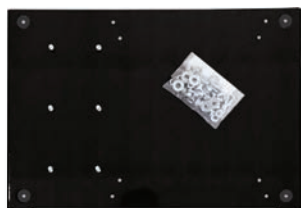
RHINO TUFF TANKS ACCESSORIES - PUMP

Accessorize or build your own system.
Many additional accessories are available
at rhinotufftanks.com

MOUNTING PLATES AND BRACKETS



RTT-4025
Side Mount Plate with Hardware



RTT-4065
Front Mount Plate with Hardware



RTT-4035
Universal Piston
Pump Bracket



RTT-4038
Universal
Hose Reel
Bracket



RTT-4055
Diaphragm Pump
Bracket

PUMPS AND DISPENSING METERS



RTT-4018
LD Series, 3:1
RTT-4019
LD Series Pump, 5:1



RTT-4077
Mini Fire-Ball® 3:1
RTT-4188
Fire-Ball® 5:1



RTT-4084
3/8" Aluminum Diaphragm Pump
RTT-4079
3/4" Aluminum Diaphragm Pump
RTT-4074
1" Aluminum Diaphragm Pump



RTT-4006
Electronic Non-Preset
Dispensing Meter
EM Series



RTT-4007
Electronic Preset
Dispensing Meter
LD Series



RTT-4106
Electronic Manual
Dispensing Meter
SD Series

RTT-4107
Electronic Preset
Dispensing Meter
SD Series

ADDITIONAL OPTIONS



RTT-4535
Oil Ace
Evacuation Cart



RTT-4011
Hose Reel
1/2"x50"ft Hose

RHINO TUFF TANKS ACCESSORIES - GRAVITY

GRAVITY FEED ACCESSORY PACKAGES

Our 2-Tank, 3-Tank and 4-Tank Gravity Feed Accessory Packages have everything you need in one box! Barbed Fittings, Braided Tubing, Hose Clamps, Thread Sealant – even an industrial Tub-O-Towel to clean up! Valves are sold separately to best match your needs.



RTT-4092
2 Tank Accessory Package



RTT-4093
3 Tank Accessory Package



RTT-4094
4 Tank Accessory Package

| MODEL NO. | NUMBER OF TANKS | POLY 1" ELBOW | 1" BRAIDED TUBING | HOSE CLAMPS | TUBE THREAD SEALANT | ELBOW KIT STAND |
|-----------|-----------------|---------------|-------------------|-------------|---------------------|-----------------|
| RTT-4092 | 2 | 1 | 5 LFT | 2 | 1 | 1 |
| RTT-4093 | 3 | 2 | 9 LFT | 4 | 1 | 2 |
| RTT-4094 | 4 | 3 | 12 LFT | 6 | 1 | 3 |



RTT-2880
Ground Fill Piping Kit 2"
with Check Valve
(Gravity System Sold Separately)

VALVES, IN-LINE OPTIONS AND CAPS

RTT offers several quality valve and pump inlet kit options to best fit your needs.



RTT-4001
Brass Spring
Release Valve -
UL Listed



RTT-4111
Brass Spring
Release Valve



RTT-4136
Brass Ball
Valve Kit



RTT-4002
Poly Ball
Valve Kit



RTT-4137
Stainless Steel
Ball Valve Kit



RTT-2815
Adapter Camlock
1-1/2"



RTT-2822
Adapter Bayonet
Dry Break 2"



RTT-4005
Desiccant Air
Breather/Filter



RTT-4012
Fill Cap Hinged
Cast Iron 2"



RTT-4032
1-Way Breather
Cap 2"



RTT-4034
2-Way Breather
Cap 2"

DEF 12 VDC AND 120 VAC PUMPS

Built with an electric motor, auto-shutoff timer and no need for dynamic seal which has created a reliable industrial pump with self-priming capabilities. 3/4" hose tail connection, On/Off Switch, 6 foot cable with socket and 20 minute duty cycle.



RTT-7101
DEF Pump 12 VDC
(7-9 GPM)



RTT-7404
DEF Pump 120 VAC
(7-9 GPM)

ADDITIONAL OPTIONS



RTT-7020
DEF Dispensing Hose 3/4"
(sold in linear foot increments)



RTT-7725 DEF Hose Reel 3/4" x 25 ft.
RTT-7750 DEF Hose Reel 3/4" x 50 ft.



RTT-7030
DEF K24 In-Line Meter



RTT-7200
SS Nozzle with
Automatic Shut-Off



RTT-7040
Nozzle Support



RTT-7001
Poly RSV Valve
and Downtube
(cut to length)



RTT-7005
Tamper Evident Zip Tie (serialized)



RTT-7035
Poly Elbow 1"
Female BSP



RTT-7032
Connector K24
to Nozzle



RTT-7010
Poly Dispense Coupler



RTT-7015
Poly Elbow 3/4" Barb
x 1" Female BSP

CUSTOM SYSTEM BRANDING

Brand your system with your company
logo or for quick fluid identification.



RTT-4083
4"x6" Blank Placard
Assembly for Valve
(500317)



RTT-4076
18"x24" Blank Placard





For Sales, Product or Pricing Information:
call **630-527-9933** email **rhinotuff@walshlong.com**

INDUSTRY APPLICATIONS

Eliminate the hassle of handling messy 55 gallon drums or bulky steel tanks in your liquid storage area. Rhino Tuff Tanks systems will help transform your area into a cleaner, more efficient work space by allowing multiple fluids to be stacked vertically.

Rhino Tuff Tanks are constructed from virgin High Density Polyethylene (HDPE) for optimum surface clarity, UV stabilization, and superior environmental stress crack resistance (ESCR). They are designed for use with polyethylene tolerant fluids and accessories.



Examples of specific uses for Rhino Tuff Tanks include, but are not limited to:

AUTOMOTIVE

Antifreeze
Lubricants
Transmission Fluids
Washer Fluids
Synthetic Oils

FARM / RANCH / AGRICULTURAL

Chemicals
Herbicides
Liquid Feed
Pesticides
Potable/Non-Potable Water

CHEMICAL

Adhesives
Detergents
Dyes
Syrups
Other Food Grade Liquids

INDUSTRIAL

Cutting Fluids
Degreasers
Detergents
Hydraulic Fluids
Lubricants

Rhino Tuff Tanks systems have been certified to be in compliance with ULC 142.14-03 Nonmetallic Bulk Containers for the Storage and Dispensing of Combustible and Non-combustible Liquids. Please contact Rhino Tuff Tanks, LLC for further certification information.

Resins used in the construction of Rhino Tuff Tanks are listed with the NSF as meeting the NSF 51 requirements and meet or exceed specifications contained in FDA Regulation 21 CFR 177.1520 (2) 3.1 and may be used as an

article or as a component of articles for use in contact with food, subject to any limitations of the regulations.

Any use of Rhino Tuff Tanks with incompatible fluids, sealants, hoses, fittings, valves or any other incompatible accessories may cause a tank failure and will immediately void any and all manufacturer's warranty associated with the product(s) supplied by Rhino Tuff Tanks, LLC.



www.rhinotufftanks.com

Rhino Tuff Tanks, 411 West Congress Street, Maple Lake, MN 55358 877-RU-TUFF-2 (877-788-8332)

©COPYRIGHT 2019 RHINO, LLC ALL RIGHTS RESERVED